

Features

- Uses PingWei advanced PerfectMOS technology
- Extremely low on-resistance $R_{DS(on)}$
- Excellent $Q_g \times R_{DS(on)}$ product(FOM)
- Excellent Low Ciss
- Qualified according to JEDEC criteria

Beneficts

- High robustness and reliability
- Increases maximum current capability
- Low power loss, high power density
- Easy paralleling

Applications

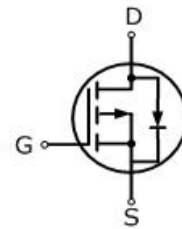
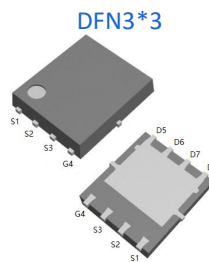
- Synchronous Rectification for AC/DC Quick Charger
- Battery management
- UPS (Uninterruptible Power Supplies)



100% DVDS Tested
100% Avalanche Tested

Product Summary

V_{DS}	-40V
$R_{DS(on)@10V\ typ}$	10.5mΩ
$R_{DS(on)@4.5V\ typ}$	14.2mΩ
I_D	-43A



Package Marking and Ordering Information

Part #	Marking	Package	Packing	Reel Size	Tape Width	Qty
PW150P04HL	150P04HL	DFN3*3	Tape&Reel	13 inches	12mm	5000pcs

Absolute Maximum Ratings

Parameter	Symbol	Value	Unit
Drain-source voltage	V_{DS}	-40	V
Continuous drain current $T_C = 25^\circ\text{C}$ (Silicon limit) $T_C = 25^\circ\text{C}$ (Package limit) $T_C = 100^\circ\text{C}$ (Silicon limit)	I_D	-45 -43 -28	A
Pulsed drain current ($T_C = 25^\circ\text{C}$, $t_p = 100\mu\text{s}$)	$I_{D\ pulse}$	-176	A
Avalanche energy, single pulse ($L=0.5\text{mH}$, $V_{ds}=-32\text{V}$)	E_{AS}	83	mJ
Gate-Source voltage	V_{GS}	± 20	V
Power dissipation $T_C = 25^\circ\text{C}$	P_{tot}	51	W
Operating junction and storage temperature	T_j, T_{stg}	-55...+150	$^\circ\text{C}$
Soldering temperature, wave soldering only allowed at leads (1.6mm from case for 10s)	T_{sold}	260	$^\circ\text{C}$

Thermal Resistance

Parameter	Symbol	Value			Unit	Test Condition
		min.	typ.	max.		
Thermal resistance, junction - case.	RthJC	-	-	2.5	°C/W	-
Thermal resistance, junction - ambient(min. footprint)	RthJA	-	-	89	°C/W	-

Electrical Characteristic (at Tj = 25 °C, unless otherwise specified)

Parameter	Symbol	Value			Unit	Test Condition
		min.	typ.	max.		

Static Characteristic

Drain-source breakdown voltage	BV _{DSS}	-40	-	-	V	V _{GS} =0V, I _D =-250uA
Gate threshold voltage	V _{GS(th)}	-1.0	-	-2.5	V	V _{DS} =V _{GS} , I _D =-250uA
Zero gate voltage drain current	I _{DSS}	-	-	-1	μA	V _{DS} =-40V, V _{GS} =0V T _j =25°C T _j =150°C
Gate-source leakage current	I _{GSS}	-	±10	±100	nA	V _{GS} =±20V, V _{DS} =0V
Drain-source on-state resistance	R _{DS(on)}	-	10.5	15	mΩ	V _{GS} =-10V, I _D =-8A V _{GS} =-4.5V, I _D =-8A
Transconductance	g _{fs}	-	28	-	S	V _{DS} =-5V, I _D =-8A

Dynamic Characteristic

Input Capacitance	C _{iss}	-	3144	-	pF	V _{GS} =0V, V _{DS} =-20V, f=1MHz
Output Capacitance	C _{oss}	-	285	-		
Reverse Transfer Capacitance	C _{rss}	-	244	-		
Gate Total Charge	Q _G	-	28	-	nC	V _{DS} =-20V, I _D =-8A, V _{GS} =-10V
Gate-Source charge	Q _{gs}	-	8	-		
Gate-Drain charge	Q _{gd}	-	8.5	-		
Turn-on delay time	t _{d(on)}	-	38	-	ns	V _{GS} =-10V, V _{DD} =-15V, R _{G_ext} =3Ω, I _D =-8A
Rise time	t _r	-	31.0	-		
Turn-off delay time	t _{d(off)}	-	90	-		
Fall time	t _f	-	9.2	-		
Gate resistance	R _G	-	9.2	-	Ω	V _{GS} =0V, V _{DS} =0V, f=1MHz



Body Diode Characteristic

Parameter	Symbol	Value			Unit	Test Condition
		min.	typ.	max.		
Body Diode Forward Voltage	V_{SD}	-	-	-1.2	V	$V_{GS}=0V, I_{SD}=-20A$
Body Diode Continuous Forward Current	I_S	-	-	-43	A	TC = 25°C
Body Diode Pulsed Current	I_S pulse	-	-	-176	A	TC = 25°C
Body Diode Reverse Recovery Time	t_{rr}	-	-	-	ns	-
Body Diode Reverse Recovery Charge	Q_{rr}	-	-	-	nC	



Typical Performance Characteristics

Fig 1: Output Characteristics

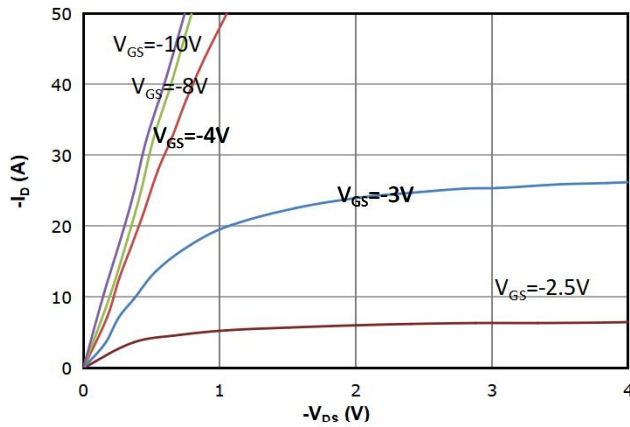


Fig 2: Transfer Characteristics

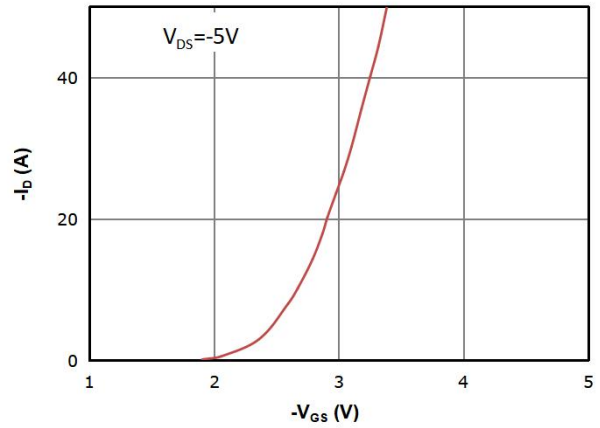


Fig 3: $R_{DS(on)}$ vs Drain Current and Gate Voltage

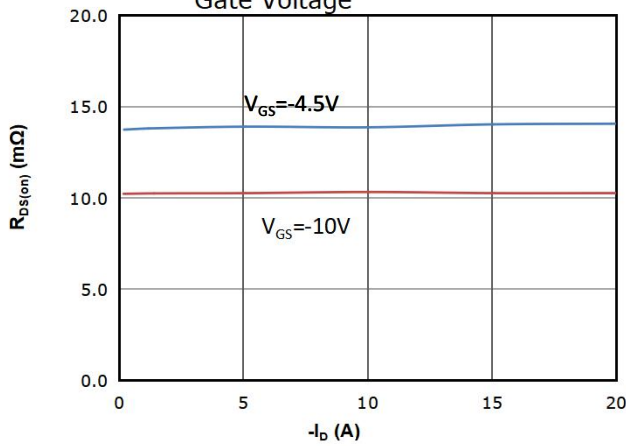


Fig 4: $R_{DS(on)}$ vs Gate Voltage

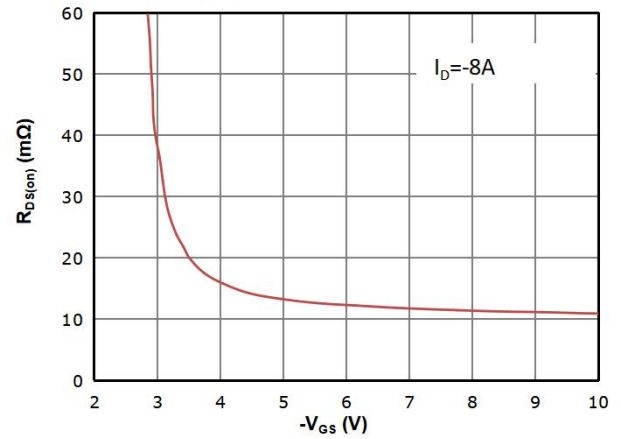


Fig 5: $R_{DS(on)}$ vs. Temperature

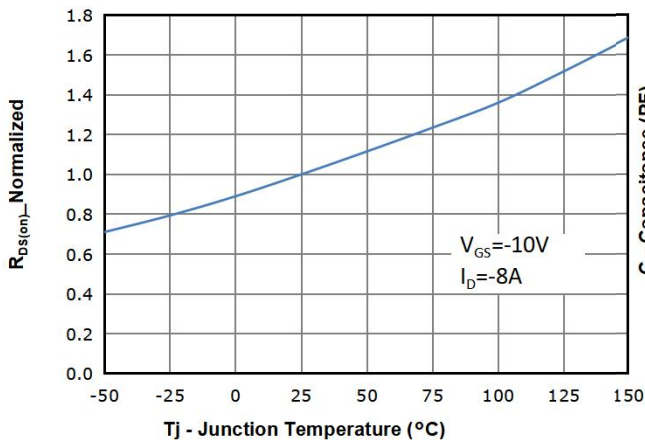


Fig 6: Capacitance Characteristics

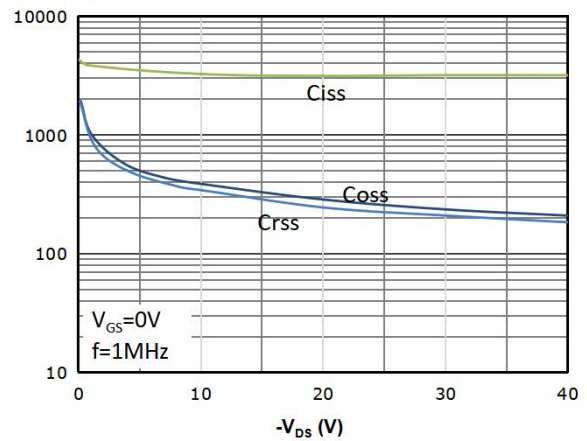




Fig7: Gate Charge Characteristics

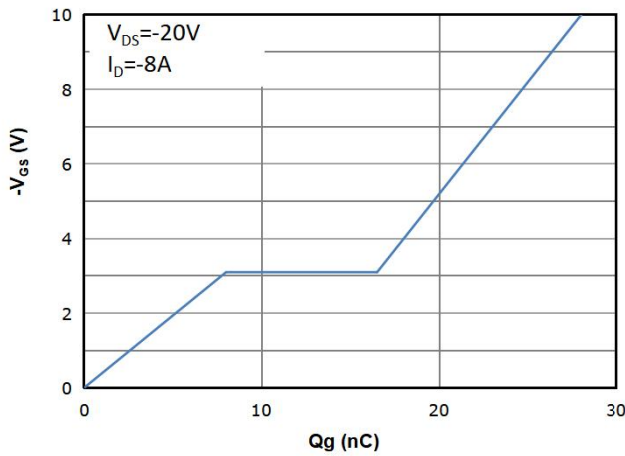


Fig 8: Body-diode Forward Characteristics

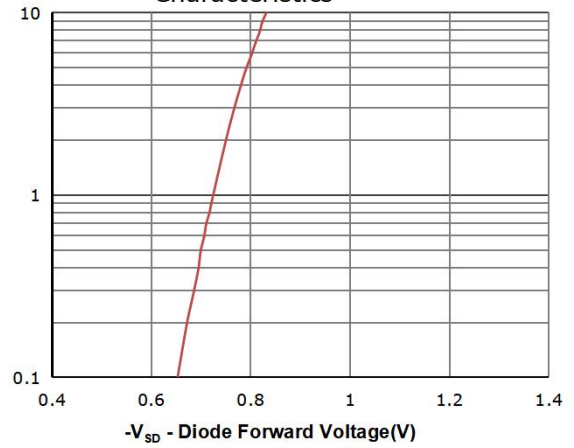


Fig 9: Power Dissipation

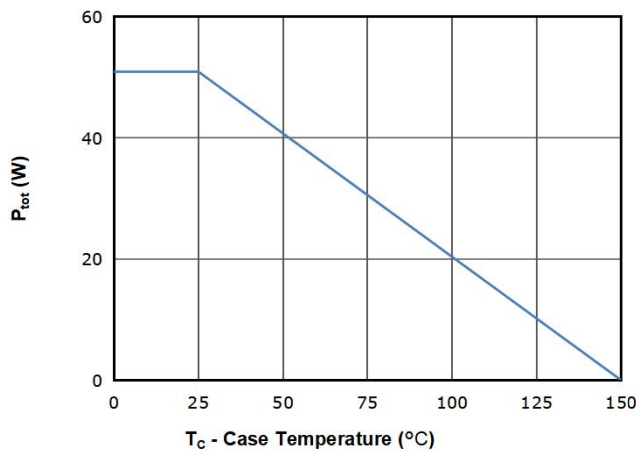


Fig 10: Drain Current Derating

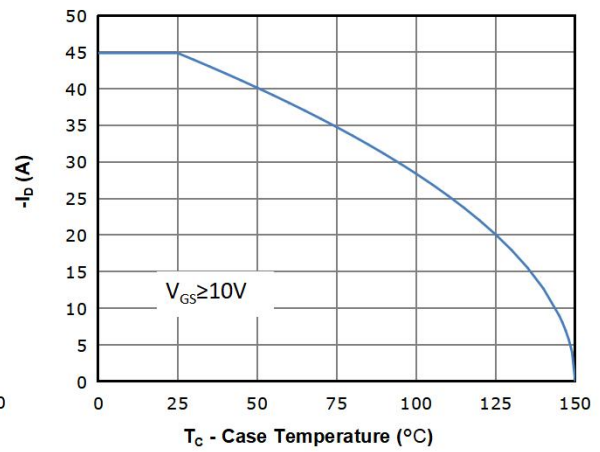


Fig 11: Safe Operating Area

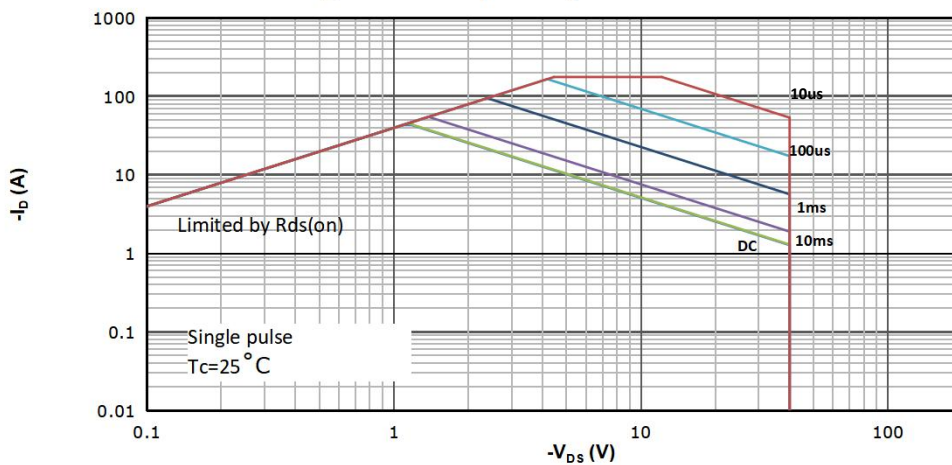
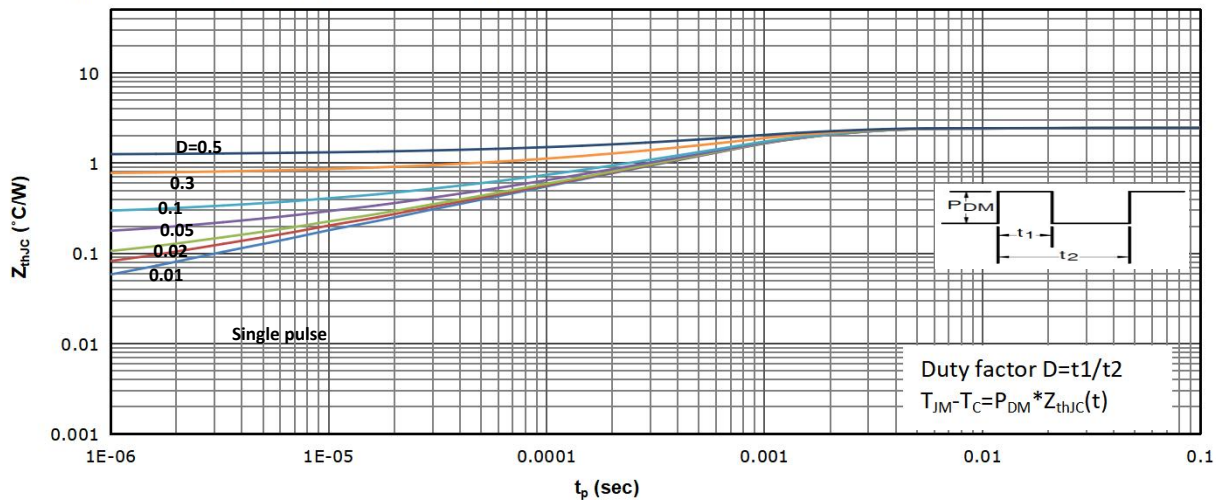


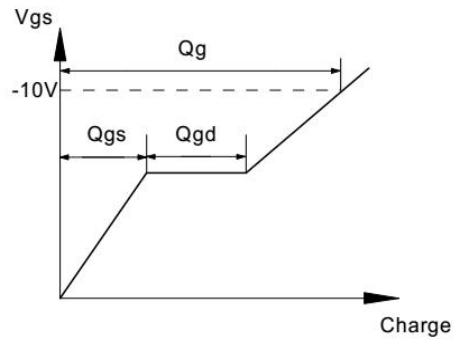
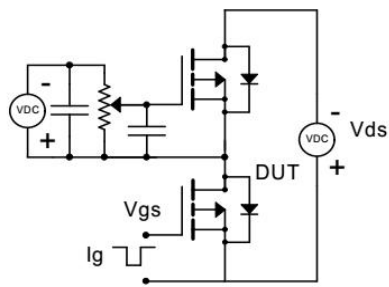


Fig 12: Max. Transient Thermal Impedance

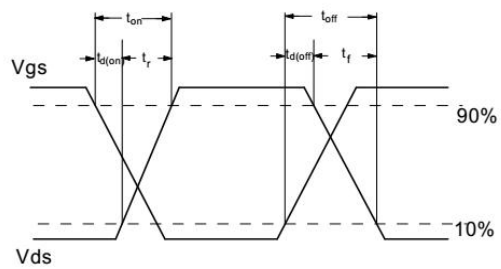
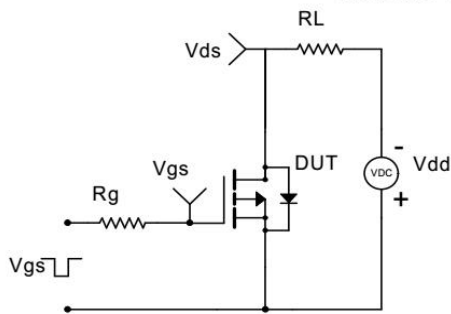


Test Circuit & Waveform

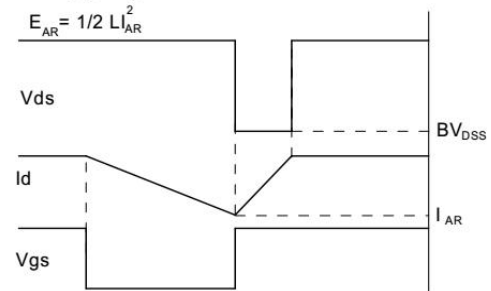
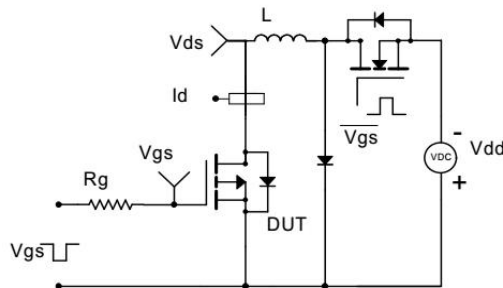
Gate Charge Test Circuit & Waveform



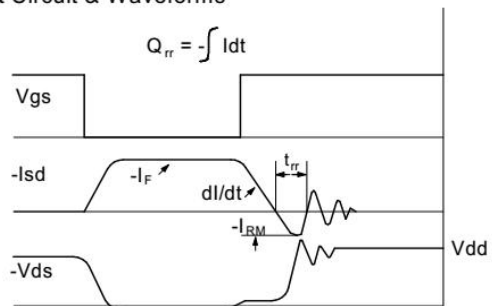
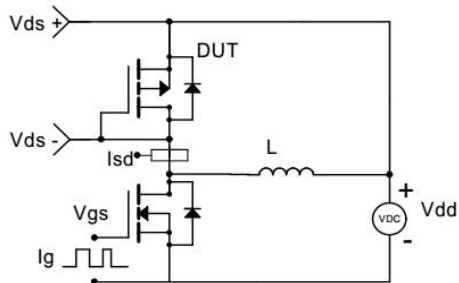
Resistive Switching Test Circuit & Waveforms



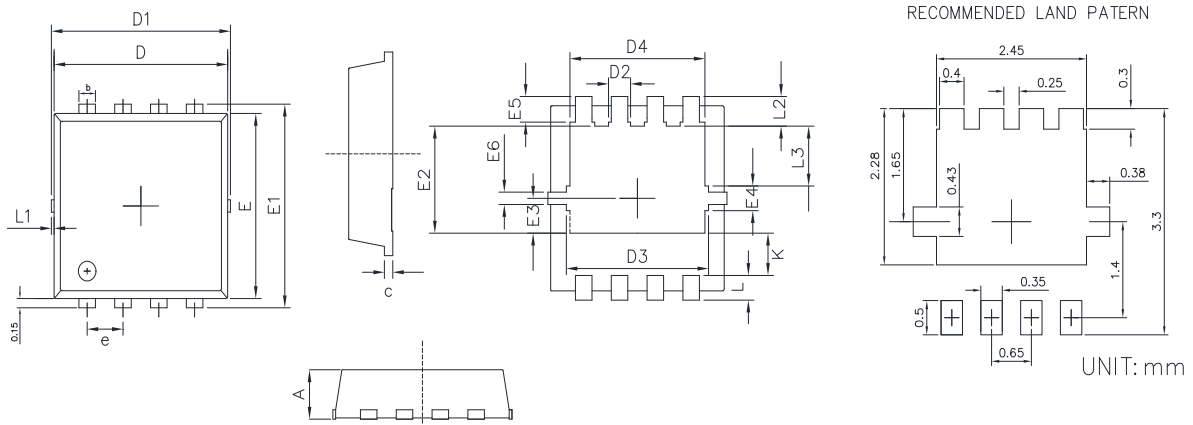
Unclamped Inductive Switching (UIS) Test Circuit & Waveforms



Diode Recovery Test Circuit & Waveforms



Package Outline: DFN3X3



SYMBOL	MILLIMETERS		INCHES	
	MIN	MAX	MIN	MAX
A	0.70	1.00	0.028	0.039
b	0.24	0.40	0.009	0.016
c	0.10	0.25	0.004	0.010
D	3.00	3.25	0.118	0.128
D1	3.10	3.50	0.122	0.138
D2	0.30	0.50	0.012	0.020
D3	2.50	2.70	0.098	0.106
D4	2.35	2.55	0.093	0.100
E	2.90	3.10	0.114	0.122
E1	3.15	3.45	0.124	0.136
E2	1.65	1.85	0.065	0.073
E3	0.48	0.68	0.019	0.027
E4	0.23	0.50	0.009	0.020
E5	0.20	0.40	0.008	0.016
E6	0.08	0.25	0.003	0.010
e	0.55	0.75	0.022	0.030
K	0.52	0.82	0.020	0.032
L	0.25	0.55	0.010	0.022
L1	0.00	0.10	0.000	0.004
L2	0.28	0.58	0.011	0.023
L3	0.88	1.08	0.035	0.043



Revision History

Revison	Date	Major changes
1.0	2023/5/9	Release of Formal Version.

Disclaimer

Any and all semiconductor products have certain probability to fail or malfunction, which may result in personal injury, death or property damage. Customer are solely responsible for providing adequate safe measures when design their systems.

Unless otherwise specified in the datasheet, the product is designed and qualified as a standard commercial product and is not intended for use in applications that require extraordinary levels of quality and reliability, such as automotive, aviation/aerospace and life-support devices or systems.

Buyer is responsible for its products and applications using PingWei products, including compliance with all laws, regulations and safety requirements or standards, regardless of any support or applications information provided by PingWei.

“Typical” parameters which may be provided in PingWei data sheets and/or specifications can and do vary in different applications and actual performance may vary over time. All operating parameters, including “Typicals” must be validated for each customer application by customer’s technical experts

ALL PRODUCT, PRODUCT SPECIFICATIONS AND DATA ARE SUBJECT TO CHANGE WITHOUT NOTICE TO IMPROVE RELIABILITY, FUNCTION OR DESIGN OR OTHERWISE